

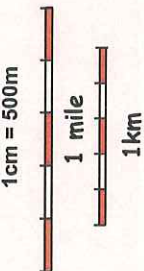
Trailmaps - Loch Bhac

Highland Perthshire Map 2

Glen Fincastle, Queen's View, Blair Atholl, Bruar

Use the map to make up your own route, or try one of the suggested routes described overleaf.

Scale Approximately 1:50,000

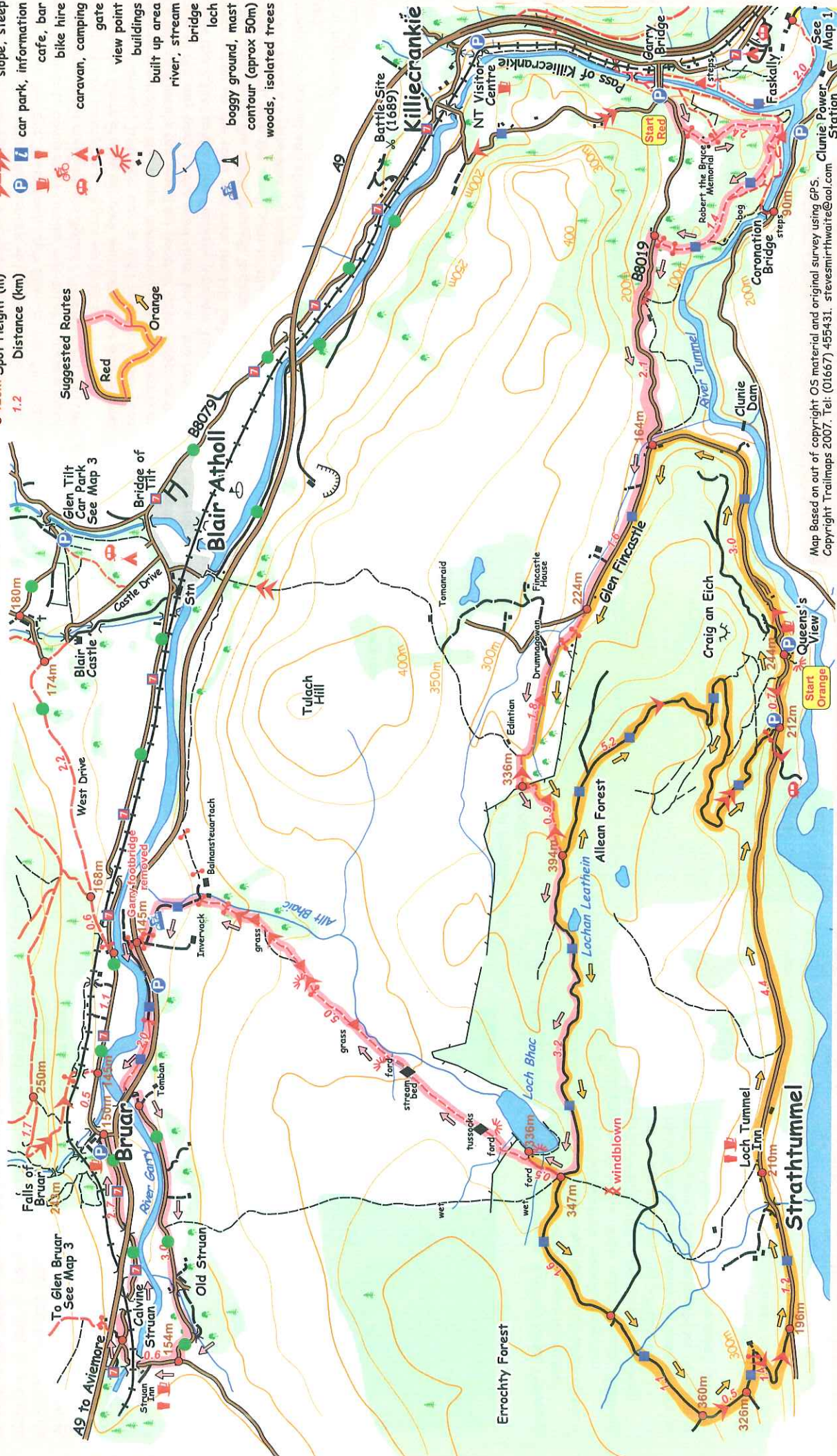


OS Map 43
Grid Reference
NN 820 620

- Trail Grades**
- Easy
 - Moderate
 - Difficult
 - Severe
- Sustrans Route 7**
- 125m Spot Height (m)**
- Distance (km)**
- Suggested Routes**
- Red
- Orange

Legend

- road
- track (bikes ok)
- path (bikes ok)
- forest road
- track
- path
- slope, steep
- car park, information
- cafe, bar
- bike hire
- caravan, camping
- gate
- view point
- buildings
- built up area
- river, stream
- bridge
- loch
- boggy ground, mast
- contour (approx 50m)
- woods, isolated trees



Highland Perthshire Map 2

Information on the Trails:



Trailmaps
for
biking and hiking



Highland Perthshire

Map 2 - Loch Bhac

Glen Fincastle, Queen's View, Bruar



Red Glen Fincastle and Loch Bhac. 35km, 3-4 hours bike ride. This route has spectacular scenery at Loch Bhac and a great single track descent, north from Loch Bhac to the Allt Bhaic glen. In order to complete a circular ride there is quite a lot of riding along roads and Sustans Route 7. The road section can be reduced by arranging for a pick-up at Bruar.

Start at the Garry Bridge car park and follow the B8019 west towards Tummel. Turn left into a field and cross the gate towards the Robert the Bruce memorial. The track bends to the left and enters the wood by another gate. Keep on this track all the way back to the road. Turn left on the road and follow this 2.1km to the Glen Fincastle junction. Turn right and climb gently up the road and take the left fork after 1.6km. Now continue on the track, through 2 gates and just before Edintian Farm, take the small path to the left. Climb up the hill and cross the gate into the forest. The trail winds its way through the woods and climbs steeply until reaching a forest road.

Turn right and continue 3.2km until the next track junction. Turn right and follow the track downhill, through a ford to the peaceful and stunning Loch Bhac.

Return back along the track for about 30m and take a small trail on the right, marked by a post. The next 5 km is long, fast and downhill. It is mostly on single track, through a variety of terrain including tussocks, stream beds and fast open meadow. It is a breathtaking ride through a panorama of spectacular mountain scenery.

The ride finishes by the main A9 trunk road. Take great care crossing the road as this is a very fast and dangerous section. Go through the gate into the field on the far side. Turn left and follow an old road 2km on the south bank of the River Garry, then under the A9 and take the minor road to Old Struan, and Calvine.

Now return to Garry Bridge by following the Sustans Route. This is quite a long way, so it may be worth arranging a pick up, or leaving a car at Bruar. The map shows some tracks and minor roads that can make the route back more interesting. There is a trail through the Atholl Estates via the West Drive and past Blair Castle. Also there is a minor road on the south side of the Garry between Blair Atholl and Killiecrankie. This road is reached by crossing the River Garry on a small footbridge in Blair Atholl.

Orange Route, 23km, 3hrs bike. (Shorter version 13km, 2 hrs) Warning: Although traffic on the B8019 road is slow, there are many blind bends so take great care.

Start at the Queen's View car park about 8km west of Garry Bridge. Turn right and follow the B8019, 3km to the Glen Fincastle junction. Turn left and climb gently along the road and take the left fork after 1.6km. Now continue on the track, through 2 gates and just before Edintian Farm, take the small path to the left. Climb up the hill and cross the gate into the forest. The trail winds its way through the woods and climbs steeply until reaching a forest road.

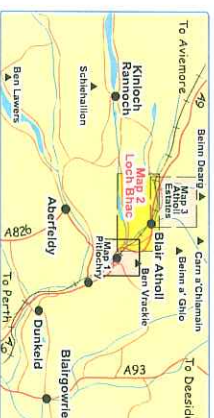
To return to Queen's View turn left here and follow the forest road 5.2km back to the B8019. Turn left for the car park.

To continue on the long route, turn right and continue 3.2km to the next track junction. Turn right and follow the track downhill 500m, through a ford to the stunning Loch Bhac.

Return back to the forest road and turn right. Now follow the forest road for 1.6km and go straight on at the 1st set of junctions. Keep straight on at the next junction as the road bends to the left and drops steeply down to a T junction. Turn left and follow the forest road around 2 bends and down to the B8019. Turn left and cycle through Strathummel where there are refreshments at The Loch Tummel Inn. Continue on the road heading east back to Queen's View.

Hot Tips If parking at Queen's View do not miss the short walk or ride to the magnificent, picture-postcard viewpoint.

Getting There The Garry Bridge, Glen Fincastle and the Queen's View are all on the B8019 that starts just north of Pitlochry and south of Killiecrankie. OS Maps 43 GR NN 910 600.



© Trailmaps, 2007

£2.50

ISBN 978-1-906184-42-1

Published by Trailmaps and printed on
waterproof paper. Tel: 01667 455431
www.trailmaps.biz

9 781906 184421



The Glen Fincastle and Loch Bhac route, described in this guide and marked on the map in red, is a classic MTB ride. It includes one of the best and longest single track descents in the area. A 2nd route is suggested, marked on the map in orange, it also visits the beautifully picturesque Loch Bhac. The orange route is mostly on road and forest tracks. The recommended rides are long, the views are stunning and there are refreshments available at the cafes and inns marked on the map. Walkers can use the map to just venture, using this map and the routes as a guide.



Loch Bhac and Beinn a' Ghlo

Facilities Bike Hire at Escape Route, 3 Atholl Road, Pitlochry, PH16 5BX. Tel: (01796) 473859. www.escape-route.biz/
For bike hire in Blair Atholl see www.basecamp-bikes.co.uk/
Camping at Faskally Caravan Park. www.faskally.com/
Tourist Attractions Queen's View above Loch Tummel. Killiecrankie Visitor Centre, (facilities are closed Nov-Mar). Pitlochry Tourist Information Centre, Tel: (01796) 472751.
Safety Weather conditions change rapidly on Scottish hills so please take care and carry extra clothing and food. Be sensible and know your limits. On these trails beware steep drop-offs and slippery tree roots.
For minor injuries contact the Irvine Memorial Hospital in Pitlochry Tel: (01796) 472052. The nearest accident and emergency facility in Perth (25 miles).

Mountain biking is a potentially dangerous activity. The cartographer assumes no liability for any injuries or loss sustained while using this guide.

Trails can be closed at short notice. For up to date information see www.escape-route.biz/